

# LTH142

## 1.4" Elliptical Tractrix



### NOMINAL SPECIFICATIONS

|                                    |  |
|------------------------------------|--|
| Type                               | Elliptical Tractrix                          |
| <b>Throat Diameter</b>             | <b>35.6 mm (1.4 in)</b>                      |
| Frequency Range                    | 0.5÷18 kHz                                   |
| Recommended Crossover Freq.        | 0.8 kHz                                      |
| Horizontal Nominal Coverage (-6dB) | 60°  |
| Vertical Nominal Coverage (-6dB)   | 50°  |
| Directivity Index                  | 9.5 dB                                       |
| <b>Material</b>                    | <b>PC/ABS</b>                                |
| Mouth Height                       | 240 mm (9.5 in)                              |
| Mouth Width                        | 350 mm (13.8 in)                             |
| Depth                              | 233 mm (9.2 in)                              |
| Mouth Mounting Holes (4x)          | 6.5 mm (0.26 in)                             |
| <b>Net Weight</b>                  | <b>890 g (1.96 lb)</b>                       |
| Shipping Box (Single Carton Box)   | 380 x 255 x 245 mm (15.0 x 10.0 x 9.6 in)    |
| Shipping Weight                    | 1.44 kg (3.17 lb)                            |
| NET Air Volume filled by HF Horn   | 2.5 dm <sup>3</sup> (0.088 ft <sup>3</sup> ) |

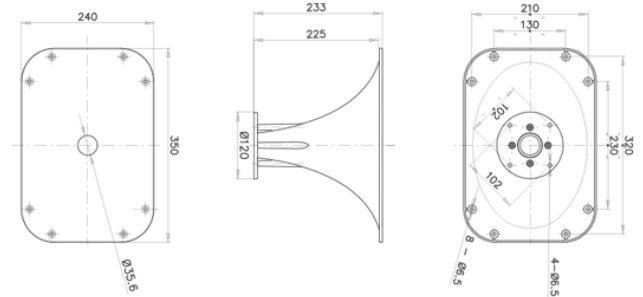
### PART NUMBER

Part Number TR992586

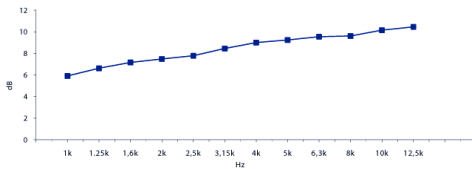
### NOTES:

Sold only in combination with a FaitalPRO 1.4" HF Driver

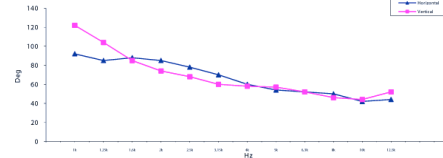
- (1) 4 π sr acoustic loading
- (2) Average value in frequency range: 1÷12.5 KHz
- (3) Average values on horizontal and vertical planes



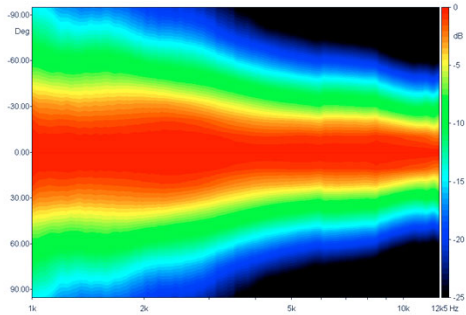
**DIRECTIVITY INDEX**



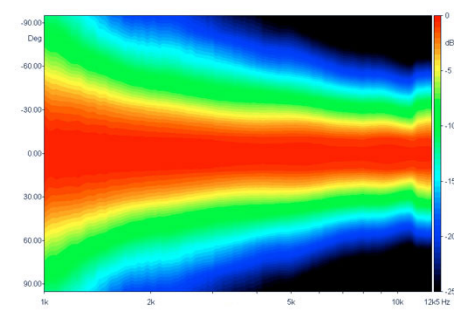
**BEAMWIDTH**



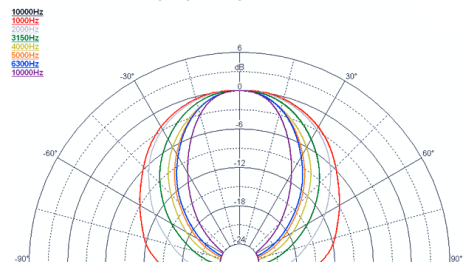
**HORIZONTAL BEAMWIDTH**



**VERTICAL BEAMWIDTH**



**HORIZONTAL POLAR PATTERN**



**VERTICAL POLAR PATTERN**

