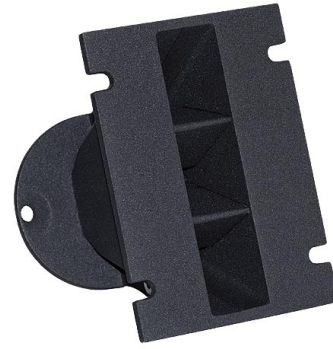


WG101

1" Plane Wave Guide



NOMINAL SPECIFICATIONS

Type	Plane Wave Guide
Throat Diameter	25.4 mm (1 in)
Frequency Range	1-20 kHz
Recommended Crossover Freq.	1.6 kHz
Horizontal Nominal Coverage (-6dB)	140°
Material	Al
Mouth Height	122.3 mm (4.81 in)
Mouth Width	86 mm (3.39 in)
Depth	110 mm (4.33 in)
Mouth Mounting Holes (4x)	6.5 mm (0.26 in)
Net Weight	480 g (1.06 lb)
Shipping Box (Single Carton Box)	150 x 123 x 102 mm (5.9 x 4.8 x 4.0 in)
Shipping Weight	500 g (1.10 in)
NET Air Volume filled by HF Horn	0.35 dm ³ (0.012 ft ³)

PART NUMBER

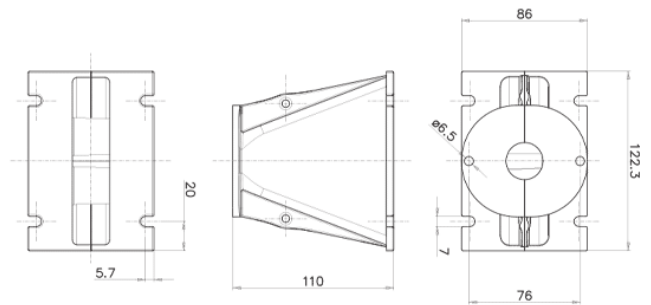
Part Number TR992541

NOTES:

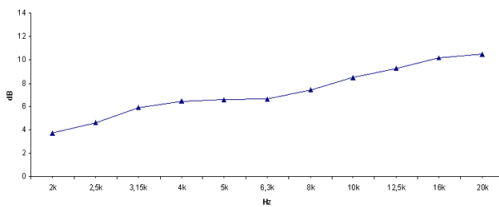
Sold only in combination with a FaitalPRO 1" HF Driver

(1) 4 π sr acoustic loading

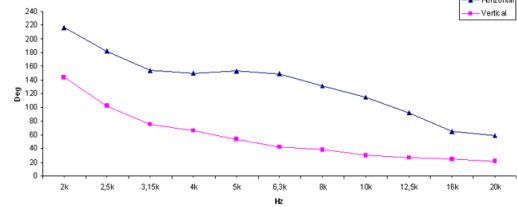
(2) Average value in frequency range: 2-16 KHz



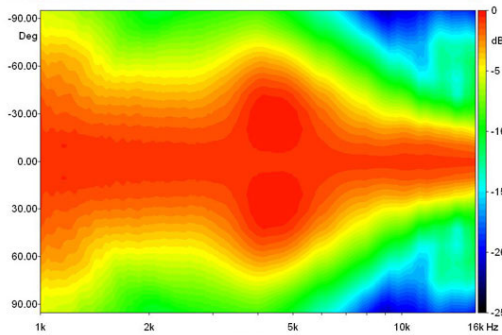
DIRECTIVITY INDEX



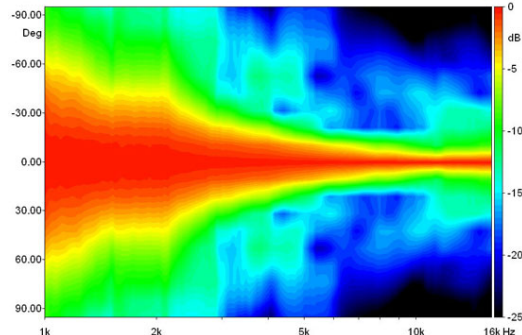
BEAMWIDTH



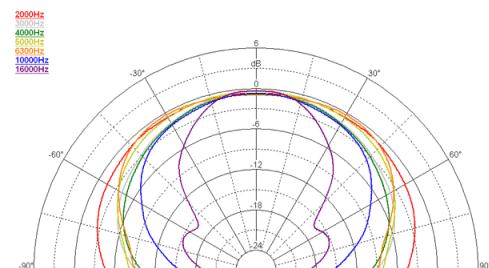
HORIZONTAL BEAMWIDTH



VERTICAL BEAMWIDTH



HORIZONTAL POLAR PATTERN



VERTICAL POLAR PATTERN

