

STH100

1" Elliptical Tractrix



NOMINAL SPECIFICATIONS

Type	Elliptical Tractrix
Throat Diameter	25.4 mm (1 in)
Frequency Range	1-20 kHz
Recommended Crossover Freq.	1.4 kHz
Horizontal Nominal Coverage (-6dB)	80°
Vertical Nominal Coverage (-6dB)	70°
Directivity Index	8 dB
Material	Al
Mouth Height	120 mm (4.72 in)
Mouth Width	180 mm (7.09 in)
Depth	85.9 mm (3.38 in)
Mouth Mounting Holes (4x)	6.5 mm (0.26 in)
Net Weight	460 g (1.01 lb)
Shipping Box (Single Carton Box)	208 x 135 x 107 mm (8.2 x 5.3 x 4.2 in)
Shipping Weight	567 g (1.25 in)
NET Air Volume filled by HF Horn	0.4 dm ³ (0.014 ft ³)

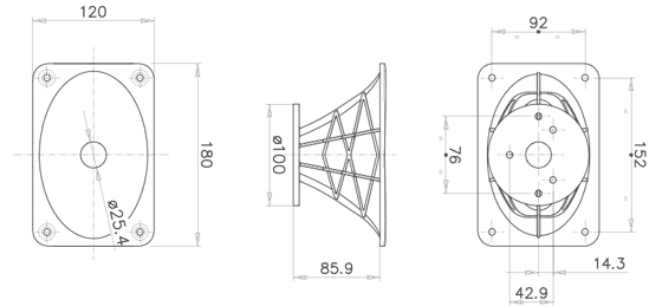
PART NUMBER

Part Number TR390104

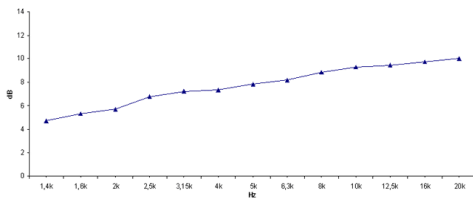
NOTES:

Sold only in combination with a FaitalPRO 1" HF Driver

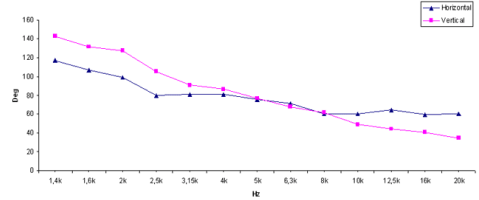
- (1) 4 π sr acoustic loading
- (2) Average value in frequency range: 2-16 KHz
- (3) Average values on horizontal and vertical planes



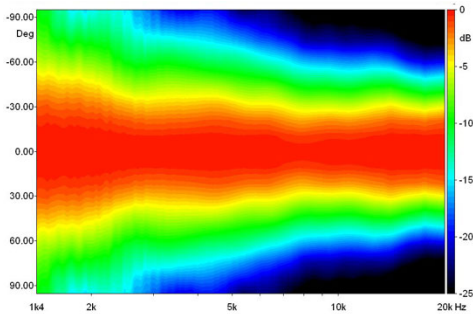
DIRECTIVITY INDEX



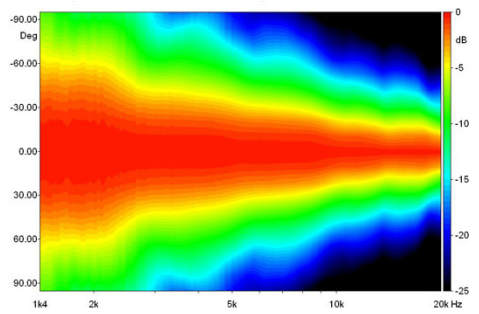
BEAMWIDTH



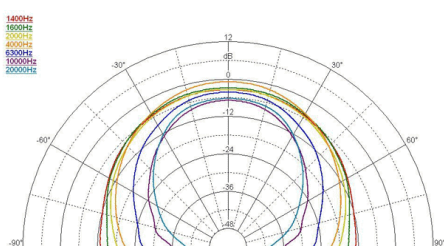
HORIZONTAL BEAMWIDTH



VERTICAL BEAMWIDTH



HORIZONTAL POLAR PATTERN



VERTICAL POLAR PATTERN

