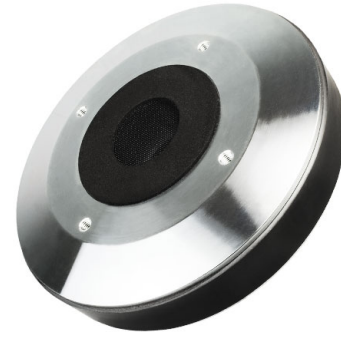


HF141

1.4" - 100 W - 109 dB - 16 Ohm



NOMINAL SPECIFICATIONS

| | |
|------------------------------------|---|
| Throat Diameter | 35.6 mm (1.4 in) |
| Overall Diameter | 170 mm (6.69 in) |
| 90° Mounting Holes Diameter (4xM6) | 102 mm (4.02 in) |
| Depth | 66 mm (2.60 in) |
| Net Weight | 4.7 kg (10.4 lb) |
| Shipping Box (Single carton box) | 195 x 195 x 141 mm (7.7 x 7.7 x 5.6 in) |
| Shipping Weight | 4.9 kg (10.8 lb) |

PART NUMBER

| | |
|---------------------------------|----------|
| Push Terminals - 16 Ohm Version | 00744209 |
|---------------------------------|----------|

NOTES:

- (1) 2 Hours Test According to AES 2-1984 Rev. 2003
- (2) Maximum power is defined as 3dB greater than nominal power.
- (3) 12 dB/oct or higher slope high-pass filter
- (4) Averaged within the frequency range
- (5) The phase plug is recessed from the driver's exit which is at the end of a conical adaptation horn.

TECHNICAL PARAMETERS

| | |
|--|---|
| Nominal Impedance | 16 Ohm |
| Minimum Impedance | 9.8 Ohm |
| AES Power above 0.9 kHz (1) | 100 W |
| AES Power above 0.65 kHz | 50 W |
| Maximum Power above 0.9 kHz (2) | 200 W |
| Maximum Power above 0.65 kHz | 100 W |
| Minimum Crossover Frequency (3) | 0.9 kHz |
| Sensitivity (1W/1m) (4) | 109 dB |
| Frequency Range | 0.5÷18 kHz |
| Voice Coil Diameter | 74 mm (2.91 in) |
| Winding Material | Al |
| Former Material | Kapton |
| Diaphragm Material | Titanium |
| Diaphragm Shape | Dome |
| Winding Depth | 2.7 mm (0.11 in) |
| Magnetic Gap Depth | 3.2 mm (0.13 in) |
| Flux Density | 1.7 T |
| Magnet | Ferrite Ring |
| Re | 8.2 Ohm |
| Phase Plug Design | Annular |
| Exit Angle (5) | 6° Conical |
| NET Air Volume filled by HF Driver | 1.05 dm ³ (0.037 ft ³) |

