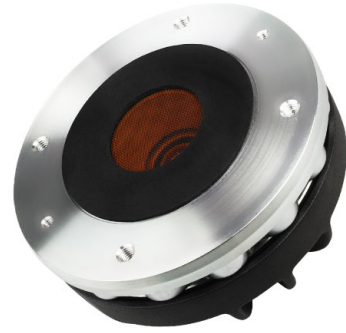


# HF146R

1.4" - 80 W - 109 dB - 16 Ohm



## NOMINAL SPECIFICATIONS

Throat Diameter	35.6 mm (1.4 in)
Overall Diameter	123 mm (4.84 in)
90° Mounting Holes Diameter (4xM6)	102 mm (4.02 in)
Depth	63.5 mm (2.5 in)
<b>Net Weight</b>	<b>2 kg (4.4 lb)</b>
Shipping Box (Single carton box)	185 x 170 x 122 mm (7.3 x 6.7 x 4.8 in)
Shipping Weight	2.3 kg (5.1 lb)

## PART NUMBER

Push Terminals - 16 Ohm Version	00654256
---------------------------------	----------

## NOTES:

- (1) 2 Hours Test According to AES 2-1984 Rev. 2003
- (2) Maximum power is defined as 3dB greater than nominal power.
- (3) 12 dB/oct or higher slope high-pass filter
- (4) Averaged within the frequency range
- (5) The phase plug is recessed from the driver's exit which is at the end of a conical adaptation horn.

## TECHNICAL PARAMETERS

Nominal Impedance	16 Ohm
Minimum Impedance	15 Ohm
<b>AES Power above 0.9 kHz (1)</b>	<b>80 W</b>
AES Power above 0.65 kHz	40 W
<b>Maximum Power above 0.9 kHz (2)</b>	<b>160 W</b>
Maximum Power above 0.65 kHz	80 W
Minimum Crossover Frequency (3)	0.9 kHz
<b>Sensitivity (1W/1m) (4)</b>	<b>109 dB</b>
Frequency Range	0.7÷18 kHz
<b>Voice Coil Diameter</b>	<b>65 mm (2.56 in)</b>
<b>Winding Material</b>	<b>Al</b>
Former Material	Kapton
<b>Diaphragm Material</b>	<b>Ketone Polymer</b>
Diaphragm Shape	Dome
Winding Depth	3 mm (0.12 in)
Magnetic Gap Depth	4.2 mm (0.17 in)
Flux Density	1.7 T
Magnet	Neodymium Slug Crown
Re	11 Ohm
Phase Plug Design	Annular
Exit Angle (5)	29° Conical
NET Air Volume filled by HF Driver	0.55 dm <sup>3</sup> (0.019 ft <sup>3</sup> )

