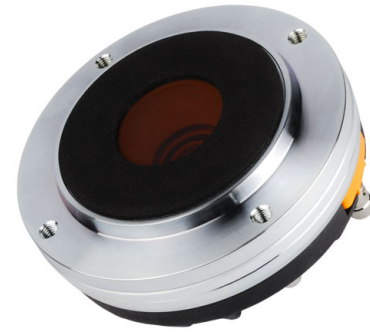


HF142

1.4" - 80 W - 110 dB - 8 Ohm



NOMINAL SPECIFICATIONS

| | |
|------------------------------------|---|
| Throat Diameter | 35.6 mm (1.4 in) |
| Overall Diameter | 115 mm (4.53 in) |
| 90° Mounting Holes Diameter (4xM6) | 102 mm (4.02 in) |
| Depth | 54.5 mm (2.15 in) |
| Net Weight | 1.64 kg (3.6 lb) |
| Shipping Box (Single carton box) | 185 x 170 x 102 mm (7.3 x 6.7 x 4.0 in) |
| Shipping Weight | 1.95 kg (4.3 lb) |

PART NUMBER

| | |
|--------------------------------|----------|
| Push Terminals - 8 Ohm Version | 00654272 |
|--------------------------------|----------|

NOTES:

- Driver mounted on **FaitalPRO LTH142 Horn**
- Perforated suspension for acoustic tuning
- (1) 2 Hours Test According to AES 2-1984 Rev. 2003
- (2) Maximum power is defined as 3dB greater than nominal power.
- (3) 12 dB/oct or higher slope high-pass filter
- (4) Averaged within the frequency range
- (5) The phase plug is recessed from the driver's exit which is at the end of a conical adaptation horn.

TECHNICAL PARAMETERS

| | |
|--|--|
| Nominal Impedance | 8 Ohm |
| Minimum Impedance | 8.4 Ohm |
| AES Power above 0.9 kHz (1) | 80 W |
| AES Power above 0.65 kHz | 25 W |
| Maximum Power above 0.9 kHz (2) | 160 W |
| Maximum Power above 0.65 kHz | 50 W |
| Minimum Crossover Frequency (3) | 0.9 kHz |
| Sensitivity (1W/1m) (4) | 110 dB |
| Frequency Range | 0.7÷18 kHz |
| Voice Coil Diameter | 65 mm (2.56 in) |
| Winding Material | Al |
| Former Material | Kapton |
| Diaphragm Material | Ketone Polymer |
| Diaphragm Shape | Dome |
| Winding Depth | 2.1 mm (0.08 in) |
| Magnetic Gap Depth | 4.2 mm (0.17 in) |
| Flux Density | 1.8 T |
| Magnet | Neodymium Ring |
| Re | 6.7 Ohm |
| Phase Plug Design | Annular |
| Exit Angle (5) | 29° Conical |
| NET Air Volume filled by HF Driver | 0.4 dm ³ (0.014 ft ³) |

