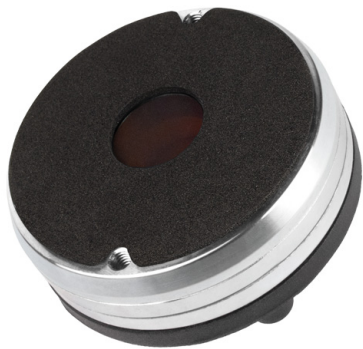


# HF1000T

1" - 70 W - 108 dB - 8 Ohm



### NOMINAL SPECIFICATIONS

Throat Diameter	25.4 mm (1 in)
Overall Diameter	90 mm (3.54 in)
180° Mounting Holes Diameter (2xM5)	76 mm (2.99 in)
Depth	49.5 mm (1.95 in)
<b>Net Weight</b>	<b>985 g (2.2 lb)</b>
Shipping Box (Single carton box)	147 x 130 x 82 mm (5.8 x 5.1 x 3.2 in)
Shipping Weight	1.1 kg (2.4 lb)

### PART NUMBER

Faston Terminals - 8 Ohm Version	TBD
----------------------------------	-----

### NOTES:

- Driver mounted on a **1" 50° x 40° Horn**
- (1) 2 Hours Test According to AES 2-1984 Rev. 2003
- (2) Maximum power is defined as 3dB greater than nominal power.
- (3) 12 dB/oct or higher slope high-pass filter
- (4) Averaged within the frequency range
- (5) The phase plug is recessed from the driver's exit which is at the end of a conical adaptation horn.

### TECHNICAL PARAMETERS

Nominal Impedance	8 Ohm
Minimum Impedance	7 Ohm
AES Power Handling (1)	70 W
<b>Maximum Power Handling (2)</b>	<b>140 W</b>
Minimum Crossover Frequency (3)	1.2 kHz
<b>Sensitivity (1W/1m) (4)</b>	<b>108 dB</b>
Frequency Range	1÷18 kHz
<b>Voice Coil Diameter</b>	<b>52 mm (2 in)</b>
<b>Winding Material</b>	<b>Al</b>
Former Material	Kapton
<b>Diaphragm Material</b>	<b>Titanium</b>
Diaphragm Shape	Dome
Winding Depth	2.6 mm (0.10 in)
Magnetic Gap Depth	3.1 mm (0.12 in)
Flux Density	2.1 T
Magnet	Neodymium Ring
Re	5.5 Ohm
Phase Plug Design	Annular
Exit Angle (5)	0° Cylindrical
NET Air Volume filled by HF Driver	0.245 dm <sup>3</sup> (0.009 ft <sup>3</sup> )

