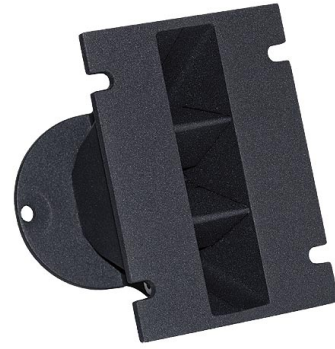


# WG101

## 1" Plane Wave Guide



### SPECIFICHE NOMINALI

产品类型	波导
<b>单元喉径</b>	<b>25.4 mm (1 in)</b>
频率范围	1÷20 kHz
适用分频点	1.6 kHz
水平角度覆盖(-6dB)	140°
<b>材料</b>	<b>铝</b>
号嘴高度	122.3 mm (4.81 in)
号嘴宽度	86 mm (3.39 in)
深度	110 mm (4.33 in)
号嘴安装孔(4x)	6.5 mm (0.26 in)
<b>净重</b>	<b>480 g (1.06 lb)</b>
包装 (纸盒独立包装)	150 x 123 x 102 mm (5.9 x 4.8 x 4.0 in)
装运重量	500 g (1.10 in)
单元充气净容量	0.35 dm <sup>3</sup> (0.012 ft <sup>3</sup> )

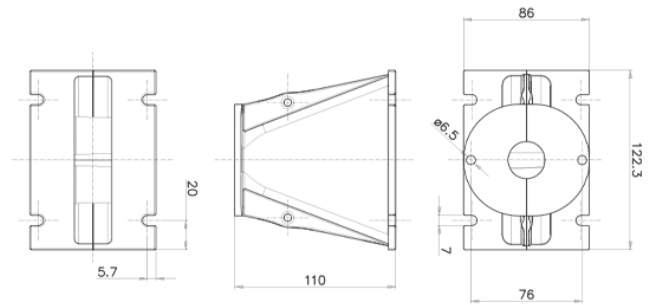
### CODICE PRODOTTO (PART NUMBER)

零件序列 TR992541

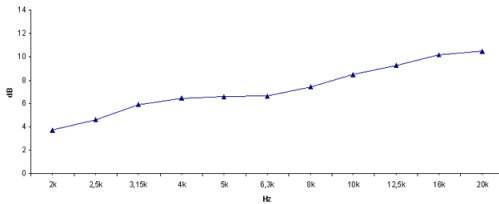
#### NOTE:

只能与FaitalPRO 1" 高音单元组合购买

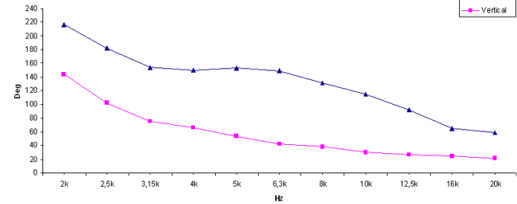
- (1) 4 π sr 声负载
- (2) 频率范围的平均值: 2÷16 KHz



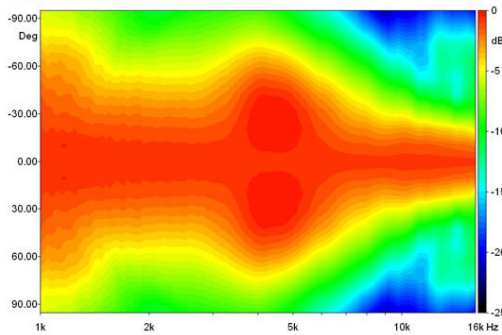
INDICE DI DIRETTIVITA'



BEAMWIDTH



BEAMWIDTH ORIZZONTALE



BEAMWIDTH VERTICALE

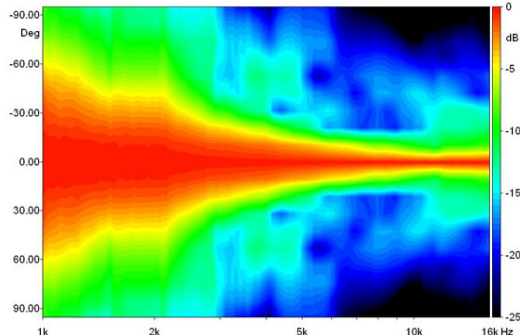


DIAGRAMMA POLARE ORIZZONTALE

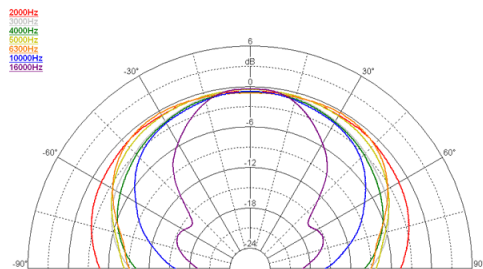


DIAGRAMMA POLARE VERTICALE

