

# LTH102

## 1" Elliptical Tractrix



### SPECIFICHE NOMINALI

产品类型	椭圆曳物线
<b>单元喉径</b>	<b>25.4 mm (1 in)</b>
频率范围	0.8-20 kHz
适用分频点	1 kHz
水平角度覆盖(-6dB)	60°
垂直角度覆盖(-6dB)	50°
定向指数	9.5 dB
<b>材料</b>	<b>铝</b>
号嘴高度	189 mm (7.44 in)
号嘴宽度	235 mm (9.25 in)
深度	171.6 mm (6.76 in)
号嘴安装孔(4x)	6.5 mm (0.26 in)
<b>净重</b>	<b>1.2 kg (2.65 lb)</b>
包装 (纸盒独立包装)	268 x 207 x 185 mm (10.6 x 8.2 x 7.3 in)
装运重量	1.45 kg (3.20 in)
单元充气净容量	1.1 dm <sup>3</sup> (0.039 ft <sup>3</sup> )

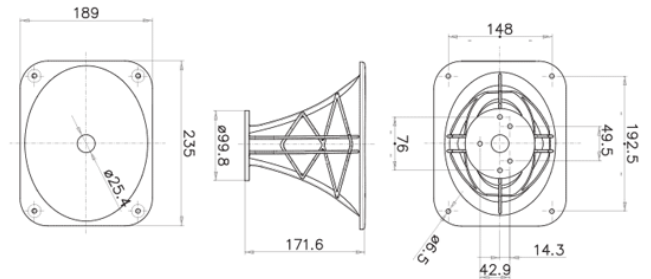
### CODICE PRODOTTO (PART NUMBER)

零件序列 TR390103

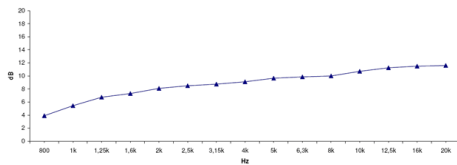
#### NOTE:

只能与FaitalPRO 1" 高音单元组合购买

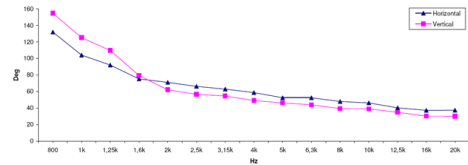
- (1) 4 π sr 声负载
- (2) 频率范围的平均值: 1.6-16 KHz
- (3) 在水平和垂直平面的平均值



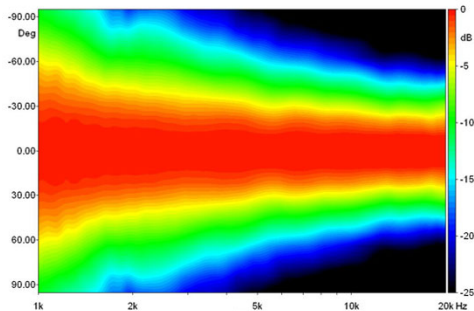
INDICE DI DIRETTIVITA'



BEAMWIDTH



BEAMWIDTH ORIZZONTALE



BEAMWIDTH VERTICALE

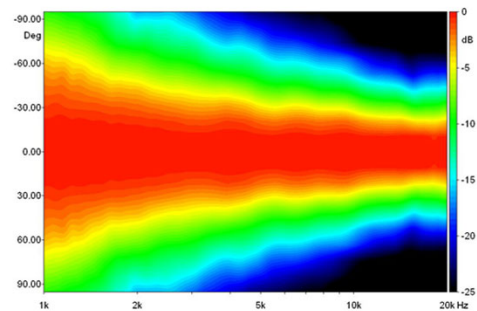


DIAGRAMMA POLARE ORIZZONTALE

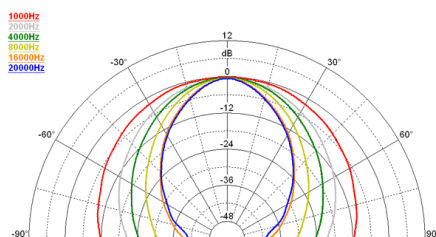


DIAGRAMMA POLARE VERTICALE

