

# STH100

1" Elliptical Tractrix



## SPECIFICHE NOMINALI

产品类型	椭圆曳物线
<b>单元喉径</b>	<b>25.4 mm (1 in)</b>
频率范围	1±20 kHz
适用分频点	1.4 kHz
水平角度覆盖(-6dB)	80°
垂直角度覆盖(-6dB)	70°
定向指数	8 dB
<b>材料</b>	<b>铝</b>
号嘴高度	120 mm (4.72 in)
号嘴宽度	180 mm (7.09 in)
深度	85.9 mm (3.38 in)
号嘴安装孔(4x)	6.5 mm (0.26 in)
<b>净重</b>	<b>460 g (1.01 lb)</b>
包装 (纸盒独立包装)	208 x 135 x 107 mm (8.2 x 5.3 x 4.2 in)
装运重量	567 g (1.25 in)
单元充气净容量	0.4 dm <sup>3</sup> (0.014 ft <sup>3</sup> )

## CODICE PRODOTTO (PART NUMBER)

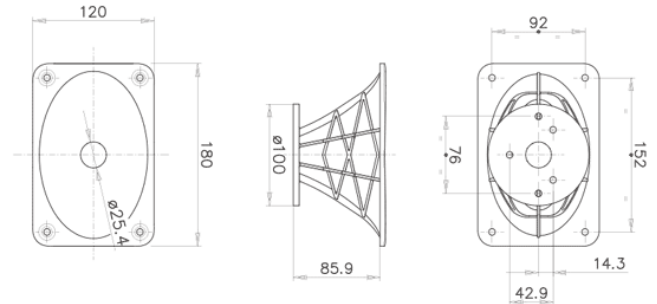
零件序列

TR390104

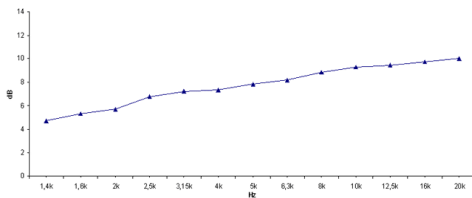
### NOTE:

只能与FaitalPRO 1" 高音单元组合购买

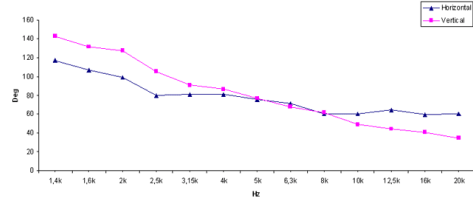
- (1) 4 π sr 声负载
- (2) 频率范围的平均值: 2±16 KHz
- (3) 在水平和垂直平面的平均值



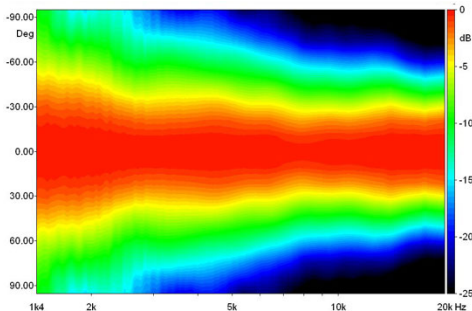
INDICE DI DIRETTIVITA'



BEAMWIDTH



BEAMWIDTH ORIZZONTALE



BEAMWIDTH VERTICALE

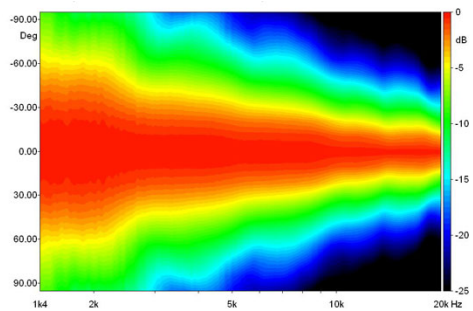


DIAGRAMMA POLARE ORIZZONTALE

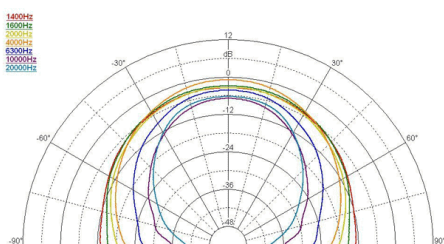


DIAGRAMMA POLARE VERTICALE

